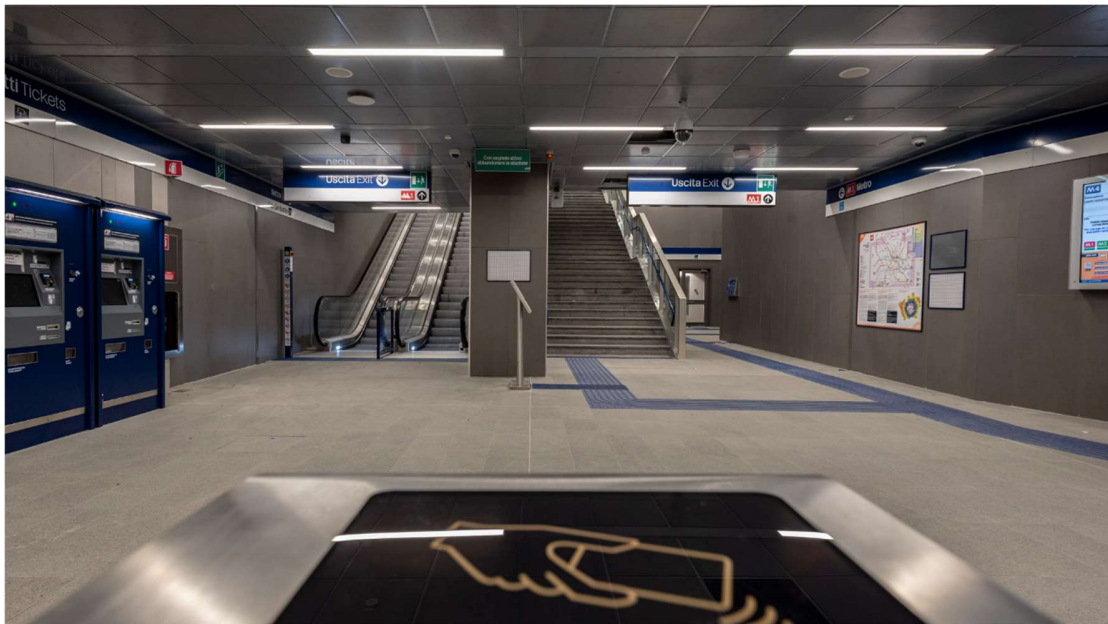


PRESS NOTE

**WEBUILD: FROM LINATE AIRPORT TO DOWNTOWN MILAN IN 12 MINUTES ON NEW M4 METRO LINE
RIBBON-CUTTING CEREMONY FOR SAN BABILA AND TRICOLORE STATIONS WITH
ITALIAN INFRASTRUCTURE AND TRANSPORT MINISTER MATTEO SALVINI, MILAN MAYOR GIUSEPPE
SALA**

**WEBUILD CEO PIETRO SALINI: “PROUD TO HAVE ACHIEVED THIS ENGINEERING FEAT WITH THE BEST
TRADES IN THE SECTOR TO SHOW ONCE AGAIN HOW TOGETHER WE CAN CREATE
TECHNOLOGICALLY ADVANCED INFRASTRUCTURE IN OUR COUNTRY”**



- *By 2024, all of the other stations towards the other end of the line at San Cristoforo will be inaugurated*
- *As of today, eight stations are open to the public along the new M4*
- *Urban renewal in the areas near the stations recently opened along the M4*

MILAN, July 4, 2023 – Milan’s Linate airport is now just 12 minutes away from the city’s historic centre following today’s inauguration of the San Babila Station of the new M4 metro line. The Tricolore Station, which precedes San Babila along the line’s route from the airport, has also opened to the public. Present at the official ceremony, alongside Webuild Chief Executive Pietro Salini, were Italian Infrastructure and Transport Minister Matteo Salvini, and Milan Mayor Giuseppe Sala.

"Italy is back up and running again with the new infrastructure that the country is equipping itself with. It is closing a decade-long investment gap in the sector that limited its competitiveness. We are particularly proud to



have built this technologically advanced metro line, which strengthens Milan's leadership in Europe as one of the most liveable cities. Some of the best trades and managers in the industry were put to work on this project to overcome very complex engineering challenges in a densely populated city. Even in this project, we have worked alongside the superintendencies for the recovery of archaeological artefacts. We have shown how – as with the Metro C line in Rome – it is possible to develop cities all the while safeguarding history and the culture of the generations that preceded us. In other words, we once again managed to work together – public and private – to realise the works that this country and its citizens need,” said Pietro Salini, Chief Executive of Webuild.

San Babila and Tricolore join the six stations of the M4 that are already in operation, running from Linate Airport to Piazzale Dateo, before heading to the centre via the Repetti, Stazione Forlanini, Argonne and Susa stops. Once fully completed, the line will have 21 stations and 15 kilometres of track, running across the city to connect the eastern end where the airport is located with the western end to the San Cristoforo terminus.

Milan's M4 is one of the most significant underground sustainable mobility projects in Europe. To date, 6,000 passengers use the line every day on the route from Linate to Dateo, and these numbers are set to grow with the opening of the two new stations. In 2024, all the other stops up to the terminus San Cristoforo will also be open, including Sforza Policlinico, which will ensure a connection with the M3 line. Once completed, the M4 will help take 180,000 vehicles off the streets, producing significant benefits in terms of reducing CO2 emissions.

The M4 is a fully automated light rail system that runs entirely underground. It is driverless, and the carriage doors open only at the station stops, with the platforms separated from the moving cars by protective glass in order to guarantee maximum safety for all passengers.

As has already happened with Viale Argonne, today's inauguration was also an opportunity to return public spaces to the city such as Piazza San Babila with urban regeneration in mind. As the construction sites are completed one by one, a radical renewal under the green and sustainability banner will be conducted, with the streets that cross squares being opened to pedestrians rather than vehicles, along with new green areas and bicycle paths.

Webuild has a remarkable track record in the field of sustainable mobility, which includes the construction of more than 800 kilometres of metro lines. Among the most innovative projects underway in Italy is the construction of the Metro C line in Rome, where work recently started on the Venezia Station in the city centre. In Paris, there is Lot 2 of Line 16 of the Grand Paris Express, while in Riyadh, the Group is building Line 3, the longest of the lines under construction in the Saudi capital, with an extension of approximately 42 kilometres and a total of 22 stations.

Webuild is a global leader in the design and construction of large, complex projects in the sectors of sustainable mobility (rail, metro, bridges, roads, ports), hydropower (dams, power plants), water (treatment and desalination plants, wastewater management, irrigation dams) and green buildings (civil and industrial buildings, airports, stadiums, hospitals). It supports clients in achieving the Sustainable Development Goals (SDGs) established by the United Nations. The recognised leader in infrastructure for the water sector, it operates in 50 countries, generating 70 percent of its revenues from international markets. It has 83,000 direct and indirect employees from 100 nationalities, and a supply chain of more than 17,500 businesses. In its 117 years of applied engineering on more than 3,200 projects, the Group has built 14,118 kilometres of rail and metro lines, 82,509 kilometres of roads and highways, 1,018 kilometres of bridges and viaducts, 3,396 kilometres of tunnels, and 313 dams and hydropower plants. Projects include the Genoa San Giorgio Bridge, the second Panama Canal, the Lake Mead Third Intake hydraulic project near Las Vegas in the United States, the Airport Line in Perth, Australia and the Stavros Niarchos Foundation Cultural Center



in Athens. Projects under construction include the Brenner Base Tunnel, Line 4 of the Milan metro system, the Terzo Valico dei Giovi-Nodo di Genova in Italy, and the North East Link of Melbourne in Australia. In 2022, the Group had revenues of €8.2 billion, total orders worth more than €53 billion, and projects that will help reduce annual CO2 emissions by 25 million tonnes. Webuild, subject to the direction and coordination of Salini Costruttori S.p.A., is headquartered in Italy and is listed on the Milan stock exchange (WBD; WBD.MI; WBD:IM). Since 2021, it is member of the MIB ESG, the index of Italian companies with the best ESG practices.

[More information at www.webuildgroup.com](http://www.webuildgroup.com)



Contacts:

Media Relations

Francesca Romana Chiarano

Tel. +39 338 247 482

email: f.chiarano@webuildgroup.com

International Media Relations

Gilles Castonguay

Tel. +39 +39 342 682 6321

email: gr.castonguay@webuildgroup.com