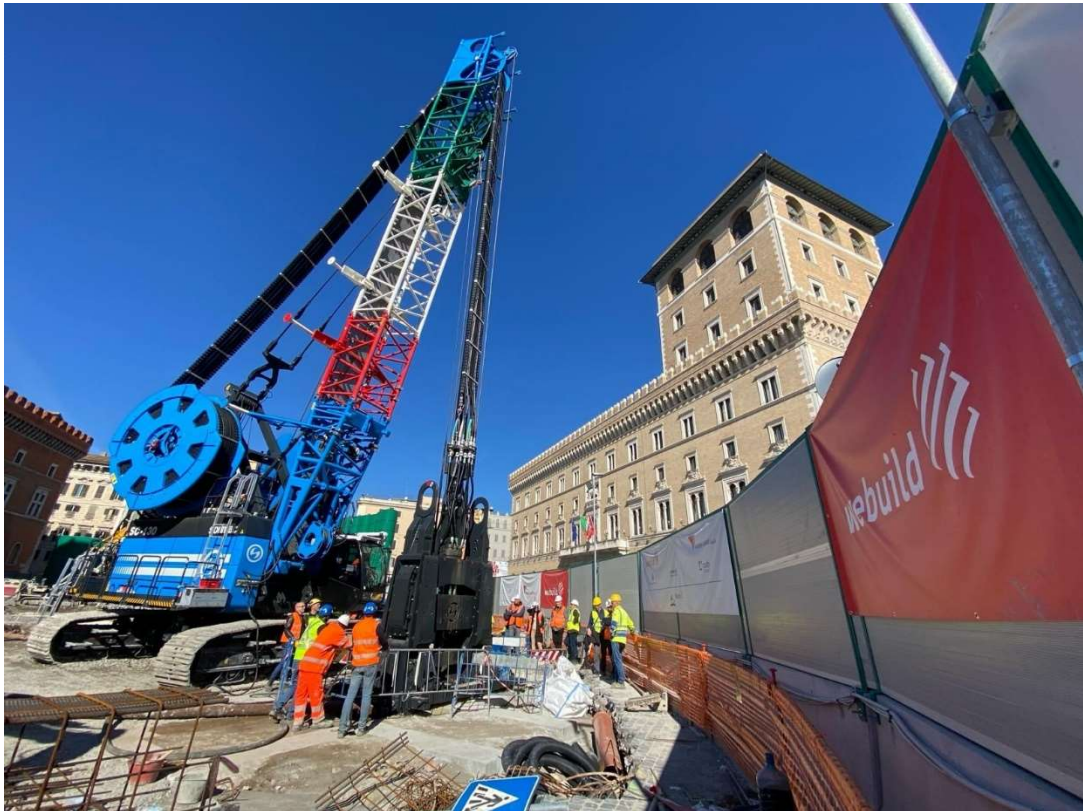


WEBUILD: "HYDRO-MILLING MACHINE" WORKS BUILT TO EXCAVATE AT RECORD DEPTH AT PIAZZA VENEZIA STATION IN ROME AT METRO C CONSTRUCTION SITE BEGIN



Rome, February 15, 2024 –During these days the hydro-milling machine, specifically built to excavate the perimeter walls of the new museum station of Piazza Venezia, up to at a record depth of 85 metres has started to function. The station will be a central hub of the Metro Line C, the capital's first self-driving line, commissioned by Roma Metropolitane and built by the consortium company Metro C S.c.p.a., led by Webuild and Vianini Lavori.

The hydro-milling machine combines complex technology and multifunctional design that will enable faster work times, greater accuracy and operability in smaller spaces, and reduced surface noise and vibration.

The machine, with a height of 24.5 metres and a weight of 185 tonnes, will work vertically making use of a high-pressure water jet. It will be used to build approximately 55 cubic metres of reinforced concrete perimeter diaphragms of the station, reaching a depth of 85 metres. The perimeter diaphragms will allow to create an hydraulically isolated box that will make it possible to excavate inside the station with the maximum safety. Its activity will continue in the forthcoming months concomitantly to the other site works, which have already started in the central part of the square, like the archaeological coring.

Webuild is a global leader in the design and construction of large, complex projects in the sectors of sustainable mobility (rail, metro, bridges, roads, ports), hydropower (dams, power plants), water (treatment and desalination plants, wastewater management, irrigation dams) and green buildings (civil and industrial buildings, airports, stadiums, hospitals). It supports clients in achieving the Sustainable

Development Goals (SDGs) established by the United Nations. The recognised leader in infrastructure for the water sector, it operates in 50 countries. It has 85,000 direct and indirect employees from 100 nationalities, and a supply chain of more than 17,500 businesses. In its 117 years of applied engineering on more than 3,200 projects, the Group has built 14,118 kilometres of rail and metro lines, 82,509 kilometres of roads and highways, 1,018 kilometres of bridges and viaducts, 3,396 kilometres of tunnels, and 313 dams and hydropower plants. Projects include the Genoa San Giorgio Bridge, the second Panama Canal, the Lake Mead Third Intake hydraulic project near Las Vegas in the United States, the Airport Line in Perth, Australia and the Stavros Niarchos Foundation Cultural Center in Athens. Projects under construction include the Brenner Base Tunnel, Line 4 of the Milan metro system, the Terzo Valico dei Giovi-Nodo di Genova in Italy, and the North East Link of Melbourne in Australia. . As of June 30, 2023, the Group had total orders worth €61 billion, with more than 90% of the Group's construction backlog related to projects linked to the advancement of the United Nations 2030 Sustainable Development Goals (SDGs). Webuild, subject to the direction and coordination of Salini Costruttori S.p.A., is headquartered in Italy and is listed on the Milan stock exchange (WBD; WBD.MI; WBD:IM). Since 2021, it is member of the MIB ESG, the index of Italian companies with the best ESG practices.

[More information at www.wbuildgroup.com](http://www.wbuildgroup.com)



Contacts:

Media Relations

Francesca Romana Chiarano

Tel. +39 338 247 4827

email: f.chiarano@wbuildgroup.com