

# EVOLUTIO

FOR 120 YEARS WE HAVE BEEN BUILDING INFRASTRUCTURE FOR THE FUTURE



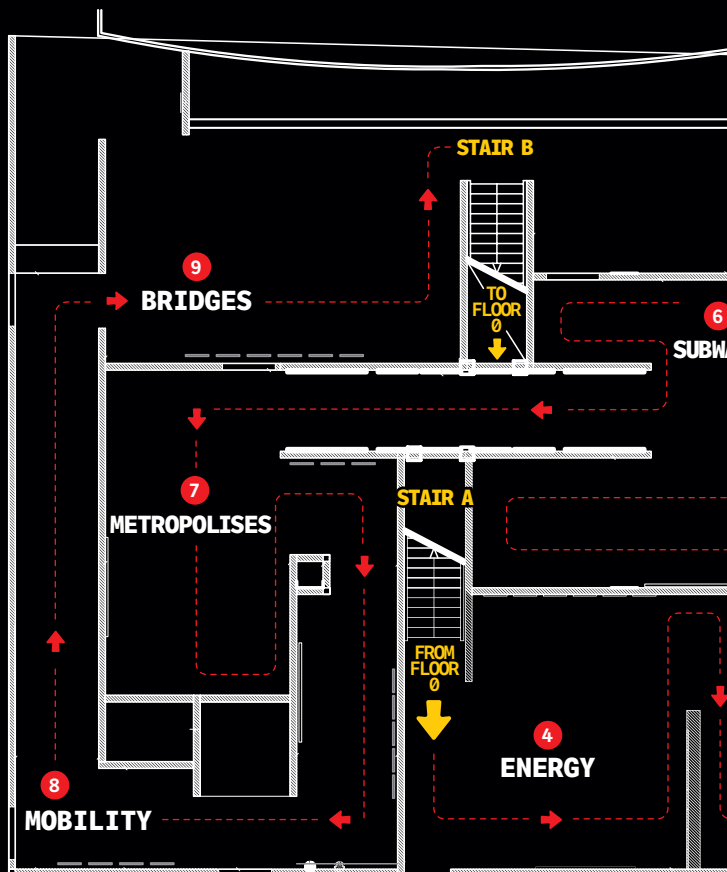
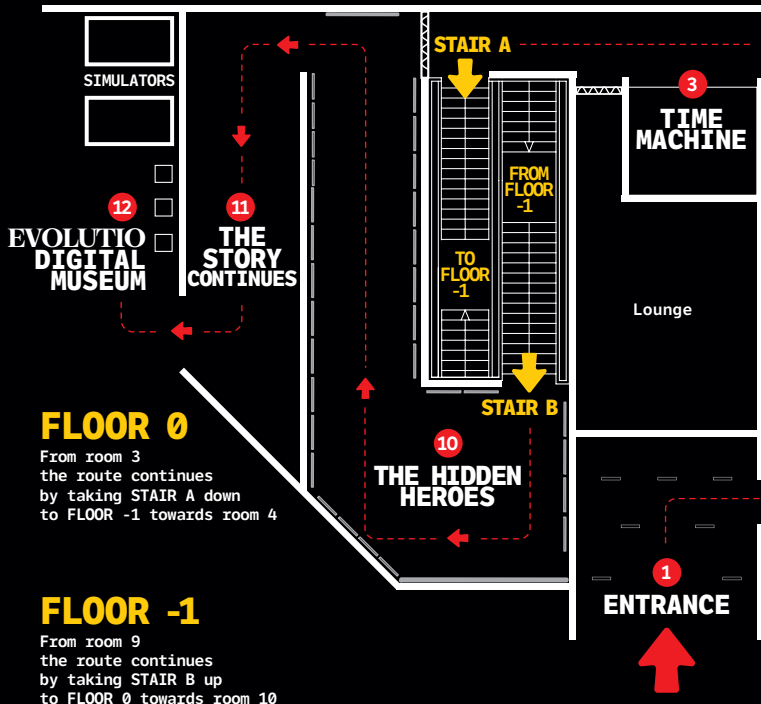
webuild 

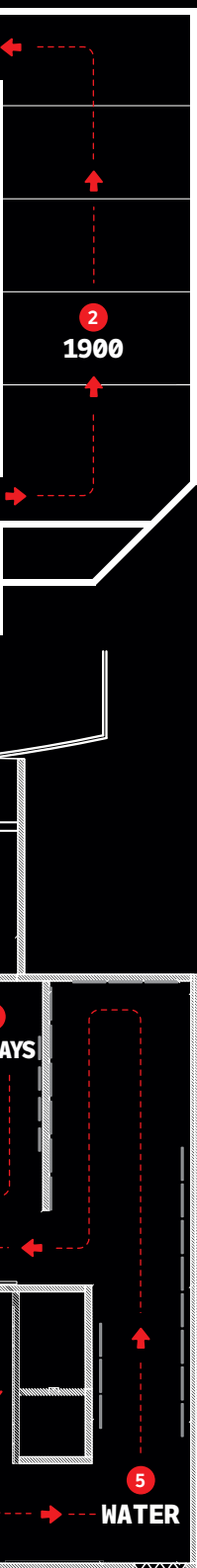
**EVOLUTIO** is a cultural initiative that offers a new narrative on infrastructure as a driver of economic, social and industrial development, capable of fueling an entire economic and productive system with an extensive value chain.

The initiative, conceived and produced by the Webuild Group, celebrates more than a century of ingenuity and work in landmark infrastructure projects that have accompanied Italy's evolution over the past century. Within **EVOLUTIO**, previously unseen images, videos and testimonies bring back the memory of a shared heritage and, at the same time, offer a glimpse into the future.



# The exhibition path





**EVOLUTIO** comes to life at the Leonardo da Vinci National Museum of Science and Technology in Milan, an exhibition conceived and produced by the Webuild Group. The initiative promotes a reflection on the role of infrastructure as a driver of economic, social, and industrial development in Italy and around the world. The exhibition tells how, over the last 120 years, roads, bridges, dams, underground networks, buildings and railways have changed people's lives and supported the country's development.

**What would the world be like without infrastructure?** It would be like returning to the beginning of the 20th century, when people lived without running water and electricity in their homes, without underground metro networks in their cities, and without high-speed railways. **EVOLUTIO** shows how Italy's path over the last century has been accompanied by the development of public works, improving people's standard of living. The exhibition also recounts the expertise that Italian industry, with a broad supply chain, has contributed to economic and social development in many countries around the world through the construction of infrastructure.

The exhibition path takes visitors on an immersive voyage between past and present, arranged in thematic rooms, beginning with the story of Italy in 1900, a country lacking infrastructure and essential services. From there, decade after decade, the narrative expands to energy development, from the first hydroelectric power plants to the major works of electrification of the country. Subsequent rooms are dedicated to water, with dams, aqueducts and desalination plants, and to urban mobility, with underground networks that transformed entire cities. Later, civic and cultural buildings and stadiums, symbols of social growth, and the major infrastructure projects that have reduced distances and united territories, such as motorways, railways, and bridges. Completing the journey is an area dedicated to 'hidden heroes', the men and women behind the major works of yesterday and today, and an area with authentic simulators to live the construction site experience.





# The permanent digital Museum

**EVOLUTIO** is the first permanent, digital-native Museum dedicated to major infrastructure. It was born from a unique and previously unseen multimedia heritage, comprising thousands of vintage photographs and films that the Webuild Group makes available to the public, collecting 120 years of history. A digital hub where visionary and technical expertise meets culture, using various art forms, from music to film, to tell a unique story of how infrastructure drives economic and social progress. Ten thematic collections guide visitors through dams, bridges, railways, underground networks, civic buildings and stadiums, told through historical records, the benefits brought to communities and territories, technical data and cultural insights. Additionally, an edutainment area and three gaming simulators allow visitors to virtually test their skills on a construction site, navigating various stages of the building process.



Discover EVOLUTIO





# Webuild Group

With 120 years of history, Webuild carries forward the legacy of some of Italy's greatest companies in the sector and is today a global leader in the design and construction of large, complex infrastructure. With more than 3,700 projects completed across five continents, the Group delivers works that combine ingenuity, technical excellence and sustainability. From Australia to the United States, via Europe and the Middle East, Webuild is involved in strategic projects that transform territories and improve the lives of communities worldwide.





## Leonardo da Vinci National Museum of Science and Technology

The Leonardo da Vinci National Museum of Science and Technology is one of Europe's largest technical and scientific museums, a place where visitors can travel through the past, present, and future. Set within the cloisters of a 16th-century former monastery, it houses the world's largest permanent exhibition dedicated to Leonardo da Vinci, the engineer and humanist.

The Museum serves as a meeting point where history, ingenuity, and innovation intertwine to tell the story of how ideas and technologies evolve. This dialogue finds its cornerstone in the figure of Leonardo da Vinci.

His multifaceted work was fueled by creative skill, keen observation, and a tireless commitment to research and experimentation. His was a fluid way of thinking, aimed at exploring the connections between things, ready to combine dreams and reality, lending equal dignity to the possible and the existing, and making a conscious effort to view the world as a unified whole.

Hosting **EVOLUTIO** in this venue means placing the narrative of contemporary infrastructure within a context that centers the role of research, science, and technology in everyday life, serving as an inspiration for new generations.



Discover the **EVOLUTIO** exhibition at

**Leonardo da Vinci National Museum  
of Science and Technology**

**February 11 - April 7, 2026**

Opening Hours:

Tuesday to Friday: 10:00 am - 5:00 pm

Saturdays and Holidays: 10:00 am - 6:30 pm

Last entry: 1 hour before closing

**Free entry to the EVOLUTIO exhibition  
in Via Olona 6/a, Milan.**

**This does not include access  
to the Museum**

Listen to the audio guide



With the patronage of



ASSOLOMBARDA

[www.museoscienza.org](http://www.museoscienza.org)

[www.webuildgroup.com](http://www.webuildgroup.com)



**webuild** 